



中國地質大學 (武漢)
CHINA UNIVERSITY OF GEOSCIENCES

Case study of an EIA in Finland, development of Highway 1 (E18)

■ detailed map of Uusimaa and near places



Top Pattaya Resort

▶ replay

Find our more



Welcome to the Uusimaa google satellite map! This place is situated in Uusimaa, Etela-Suomi, Finland, its geographical coordinates are 60° 22' 0" North, 25° 4' 0" East and its original name (with diacritics) is Uusimaa. See Uusimaa photos and images from satellite below, explore the aerial photographs of Uusimaa in Finland.



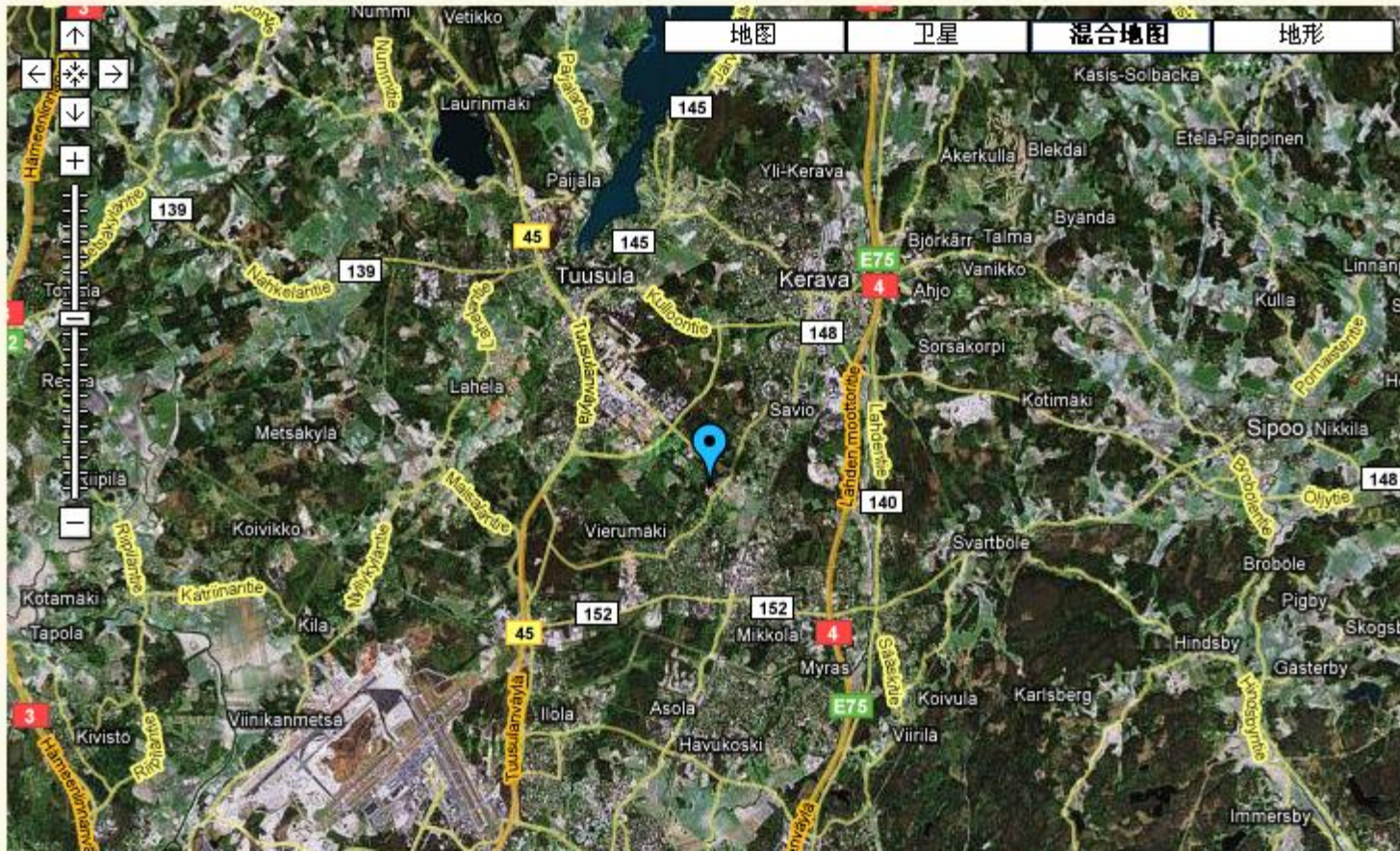
Ads by Google

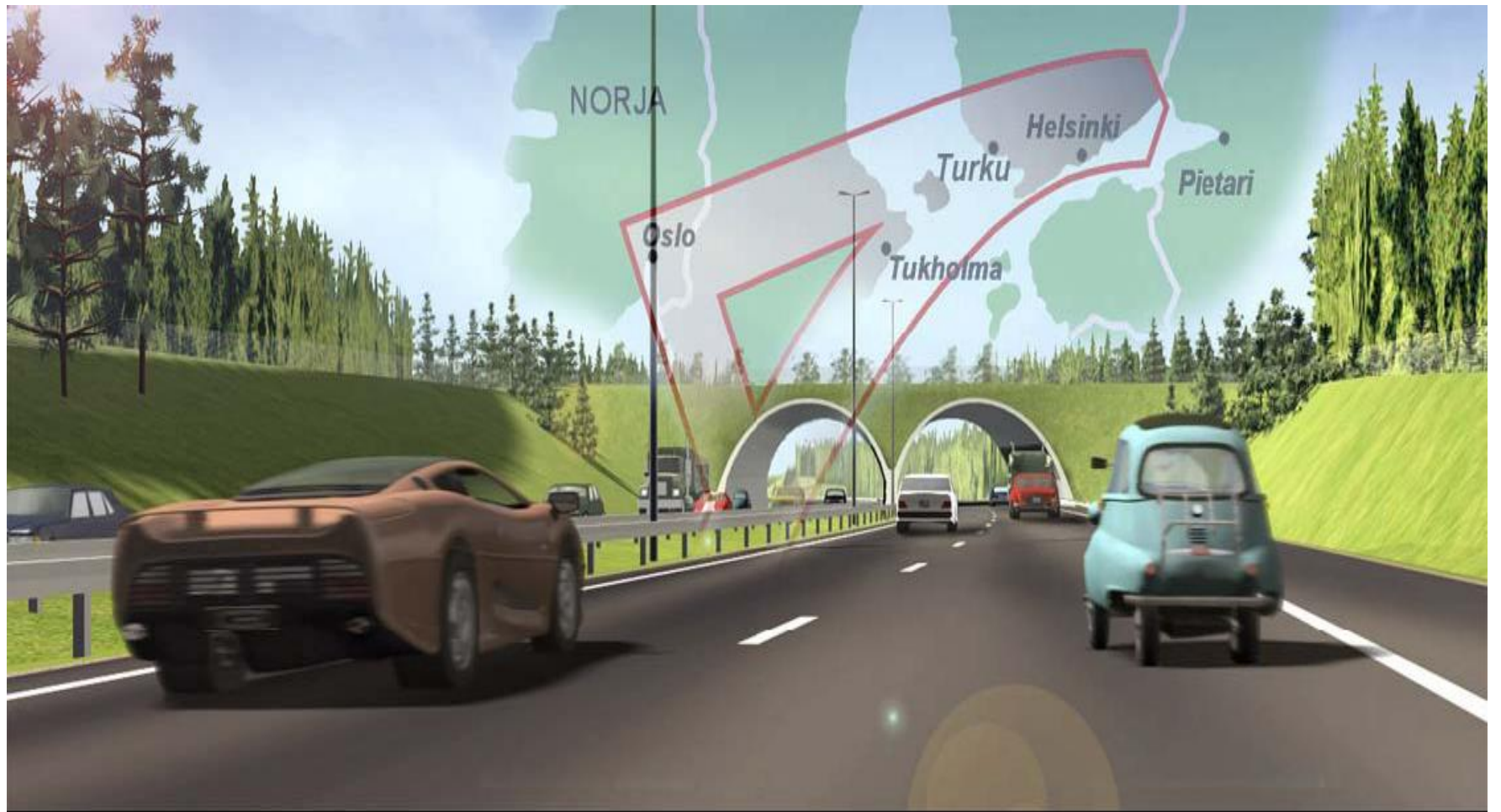
Finland Maps

Finland Helsinki

Finland Deals

Satellite





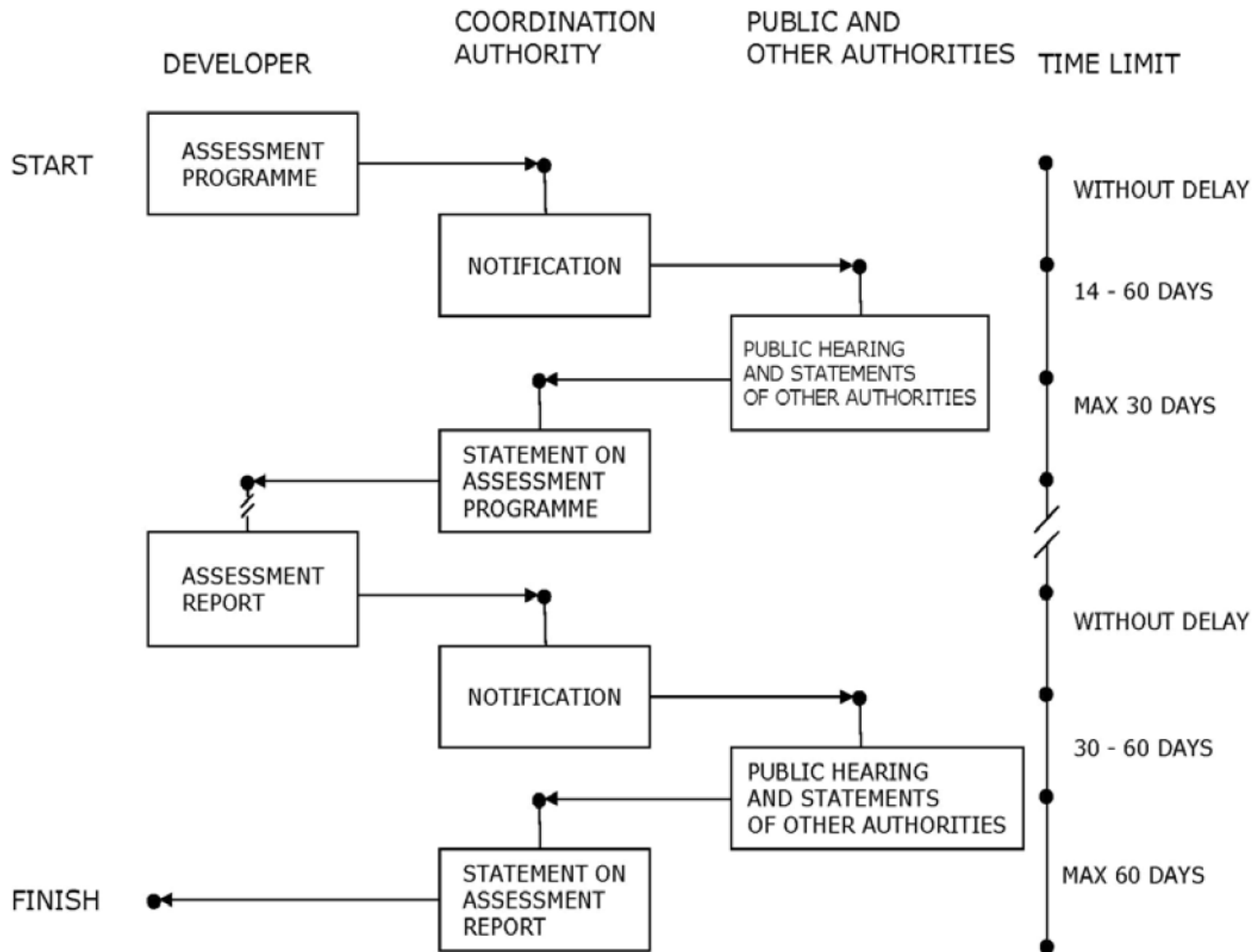


The national Highway 1 is part of the European road E18, which is the most important east-west road corridor in Finland. The E18 is a central element of the Nordic Triangle, which links the Nordic capitals to each other, to Russia and to central Europe, and it is part of the network.

Background

- The section of Highway 1 (63 km) is narrow, winding and unsafe.
- In the 1960s , the Road Administration began planning to develop this highway to a motorway standard. A preliminary design with several alternatives was completed in 1988
- And in 1990 the Ministry of Transport made a decision on a project for a motorway between Salo and Lohja and chose the alternative for the final design.
- The Road Administration worked on completing the final design during 1992 and 1993, before Finland joined the European Union in 1995 and before the Finnish EIA legislation came into force on 1 September 1994.
- However, in accordance with the Finnish EIA legislation, this project was still subject to a mandatory EIA.

The EIA procedure in Finland



Lessons learned

- An important point is to be sensitive to the new information and not to rely too much on the old information.
- If you receive a hint about something, check it out and don't ignore it.
- Be aware of the legislation.
- Don't choose an alternative too early. There should be several alternatives.